

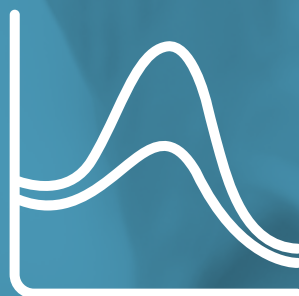




**HUMAN** MADE



**VET** MADE



**AUTO** MADE

Futurlab® is an Italian company, founded in 2003 and it's specialized in the production and commercialization of diagnostic and analytical systems and products addressed to the clinical world.

It operates in 3 different business units: HumanMade, VetMade and AutoMade, where innovation is brought through their interaction and

knowledge exchange.

Futurlab® makes the Customers at the center of its business, and through its team, the company is able to support them, in the technological and scientific development of their business, offering advices, webinars, training and assistance to satisfy all their needs.

***Futurlab® model breaks down barriers and makes things possible.***





**AB** ANIMAL<sup>®</sup>  
BLOOD



ANIMAL<sup>®</sup>  
BLOOD

---

Animal Blood line, designed and commercialized by Futurlab<sup>®</sup> was created to provide the veterinary field with superior quality products, comparable to those produced for the human market, to guarantee safety standards for both the operator and the patient.

We have dedicated professionalism and care to develop this line, because we really care about animal's health.

# INDEX

## 1. AB BAGS | TRANSFUSION

### KIT

Kit for collection and storage of cat blood	10
Kits for collection and storage of ferret blood	11
Kit for collection and storage of medium-small dog blood	12
Kit for collection and storage of big sized dog blood	13
Kit for leukodepletion for small-medium sized dogs	14
Kit for dog blood separation	15
Kit for Ozone Therapy	16

### INSTRUMENTS

Bags centrifuge	18
Centrifuge components*	19
Refrigerator-blood bank with temperature control*	20
Plasma extractor or manual squeezer*	21
Bag tube closure systems	22
Blood collection scale	23
Rapid test for blood type determination*	24
Holder Locker*	25
Blood transfuser with filter	26
Extension pipe	27
Needle free valve*	28

## 2. AB BAGS | CHEMOTHERAPY

### KIT

Kit for withdrawal, mixing and infusion of chemotherapeutics	32
Kit for chemotherapeutic drug collection and transfer	34

Kit to drugs and saline access, or to safety withdraw and blend them without the use of needle	36
Kit to drugs or saline access and safely collect or blend without the use of a needle	37
Kit to saline access, to safely withdraw or blend without the use of a needle	38

## **INSTRUMENTS**

Biohazard extractor hood Asalair Mod.900	39
Hood accessories	40

## **CONSUMABLES AND DISPOSABLE**

Personal protective equipment*	41
Needle free valve*	43
Safety container for histological*	44

## **3. PRP SYSTEM**

### **KIT**

PRP Kit	48
10ml Bag*	50

### **INSTRUMENTS**

PRP centrifuge	51
Centrifuge components and accessories*	52
Centrifuge consumable*	53

## AB BAGS - TRANSFUSION

The AB BAGS - is an innovative product line which enables the operator to provide transfusions in a closed, aseptic and safe circuit, with a correct dosage of anticoagulant, without assembling components from human medicine, running the risk of bacterial contamination or rapid blood clotting.







# 1 | AB BAGS TRASFUSION

## Kit

### Kit for collection and storage of cat blood

The primary bag collects the blood withdrawn with the syringe through a unidirectional valve. It is possible to use the device on cats of any size by connecting the butterfly needle of the desired gauge and test the blood in any moment, maintaining sterility.

SKU	DESCRIPTION	COMPOSITION
TEC724-10	Veterinary medical device for feline blood collection up to 60ml and blend it with anticoagulant solution at a ratio of 1:7	<ul style="list-style-type: none"><li>• 1 primary bag</li><li>• 1 satellite bag</li><li>• 2 needle free connectors</li><li>• 1 syringe of 10ml containing ACD-A</li><li>• 1 syringe of 20ml for withdrawal</li><li>• adapter for universal infusion set</li><li>• Open/close safety valve, in closeproximity of the syringe filled with ACD-A</li></ul>

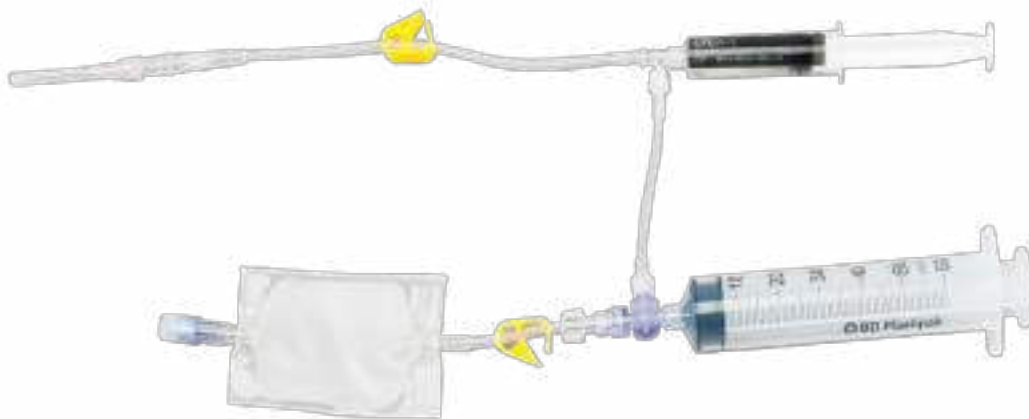


# 1 | AB BAGS TRASFUSION

## Kits for collection and storage of ferret blood

The primary bag collects the blood withdrawn with from the syringe through a unidirectional valve. It is possible to test the blood in any moment, maintaining sterility.

SKU	DESCRIPTION	COMPOSITION
TEC718	Veterinary medical device for the collection of known volumes of ferret blood and blend it with anticoagulant solution at a ratio of 1:7	<ul style="list-style-type: none"><li>• 1 primary bag</li><li>• 1 needle free connector</li><li>• 1 syringe of 10ml containing ACD-A</li><li>• 1 syringe of 20ml for withdrawal</li></ul>



# 1 | AB BAGS TRASFUSION

## Kit for collection and storage of medium-small dog blood

It is possible to sample and transfuse part of the blood collected through the needle free connection. Twist off connectors allow the connection with perforator equipped devices.

SKU	DESCRIPTION	COMPOSITION
TEC713-10	Veterinary medical device for canine whole blood collection	<ul style="list-style-type: none"><li>• 1 350ml bag containing 50ml of ACD-A</li><li>• 1 needle</li><li>• 1 needle free connector</li><li>• 1 penetrable twist off</li></ul>





# 1 | AB BAGS TRASFUSION

## Kit for collection and storage of big sized dog blood

It is possible to sample and transfuse part of the blood collected through the needle free connection. Twist off connectors that allow connection with perforator equipped devices.

SKU	DESCRIPTION	COMPOSITION
TEC711-10	Veterinary medical device for canine whole blood collection	<ul style="list-style-type: none"><li>• 450ml bag containing 65ml of ACD-A</li></ul>



# 1 | AB BAGS TRASFUSION

## Kit for leukodepletion for small-medium sized dogs

It is possible to sample and transfuse part of the blood collected through the needle free connection.

Twist off connectors allow connection with perforator equipped devices.

SKU	DESCRIPTION	COMPOSITION
TEC708-1	Veterinary medical device for canine whole blood leukodepletion	<ul style="list-style-type: none"><li>• 1 primary 350ml bag containing 50ml ACD-A</li><li>• 1 secondary 350ml bag</li><li>• 1 in line filter for leukodepletion</li><li>• 1 needle</li><li>• 2 needle free connectors</li><li>• 1 twist off</li></ul>



# 1 | AB BAGS TRASFUSION

## Kit for dog blood separation

It is possible to sample freshly-withdrawed blood or after storage blood through needle free connectors. Twist off connectors allow the connection.

SKU	DESCRIPTION	COMPOSITION
TEC709N-10	Veterinary medical device for separation of canine blood through centrifugation	<ul style="list-style-type: none"><li>• 450ml primary bag containing 65ml ACD-A</li><li>• 1 empty secondary 300ml bag</li><li>• 1 secondary 300ml bag containing 105ml of sagmanithol</li><li>• 1 needle</li><li>• 3 needle free connctors</li><li>• 3 twist off</li></ul>



# 1 | AB BAGS TRASFUSION

## Kit for Ozone Therapy

The ozone therapy treatment consists in the collection of a certain amount of blood from a patient: the blood is exposed to an oxygen-ozone blend and eventually re-infused in the patient, sterility is guaranteed.

SKU	DESCRIPTION	COMPOSITION
TEC876	Veterinary medical device for ozonated self-hemotherapy treatments, with oxygen-ozone blend.	<ul style="list-style-type: none"><li>• 350ml bag containing 20ml of ACD-A</li></ul>





# 1 | AB BAGS TRASFUSION

## Kit for Ozone Therapy

With the ozone therapy treatment, the blood withdrawn from a patient is exposed to an oxygen-ozone blend. The sterility of the re-infusion of the ozonated blood in the patient is guaranteed.

SKU	DESCRIPTION	COMPOSITION
TEC876/35	Veterinary medical device for ozonated self-hemotherapy treatments, with oxygen-ozone blend.	<ul style="list-style-type: none"><li>• 350ml bag containing 35ml of ACD-A</li></ul>



## Instruments

### Bags centrifuge

With high performance, it is indispensable in medical laboratories and blood transfusion centers. For a fast separation of plasma and blood cells.

SKU	DESCRIPTION	COMPOSITION
HT5660	Bench, top refrigerated and rotary centrifuge for bags 460R	<ul style="list-style-type: none"><li>• Max. Capacity: 4 x 750ml</li><li>• Max. Speed (RPM): 15.000 min-1</li><li>• Max. RCF: 24.400</li><li>• Temperature: -20° to +40°</li></ul>



# 1 | AB BAGS TRASFUSION

## Centrifuge components\*

SKU	DESCRIPTION	COMPOSITION
HT5699-R	Centrifuge rotor	Oscillating rotor 90° with 4 arms for rotating centrifuge 460R
HT5691-A	Bascule for bags	Bascule for 450ml triple and quadruple blood bags PKG/4 pieces
HT5692	Bascule adapter	Adapter for bascule 5691-A PKG/4 pieces For triple blood bags without filter and quadruple blood bags with and without filter
HT5693	Support clamps	Support clamps for triple bags PKG/4 pieces For supporting blood bags inside the HT5692 adapter



# 1 | AB BAGS TRASFUSION

## Refrigerator-blood bank with temperature control\*

To store bags at a controlled and recorded temperature.

SKU	DESCRIPTION	COMPOSITION
100 ETC-F TOUCH	Refrigerator-blood bank	<ul style="list-style-type: none"><li>• Temperature range: +4°</li><li>• Capacity: 126lt - 21 bags of 450ml</li><li>• Dimensions: 52x63,5x86,5 cm</li><li>• Structure and thermal insulation in white antibacterial plasticized steel</li><li>• Polyurethane thermal insulation thickness 40mm</li><li>• Butted tempered glass door</li><li>• Electronic lock</li><li>• Wheels with brake</li><li>• Full Led lighting with adjustable intensity</li><li>• Internal equipment of n.1 aluminium, completely removable drawer</li><li>• Controller ECT-F TOUCH + DMPL TOUCH DIGITAL MONITOR</li><li>• Visual and audible alarms for temperature, fault and black-out, with automatic recording even in absence of power</li><li>• Data and events recording of the last 10 years on an sd card; 1 year on flash memory</li><li>• Customizable real-time temperature graph and always visible on the display</li><li>• USB-SD-SIM port connectivity with front access</li><li>• Forced ventilated refrigeration</li><li>• Automatic defrosting with condensate water evaporation</li><li>• Directive 93/42/EC - class IIa and subsequent amendments and additions compliant</li></ul>





# 1 | AB BAGS TRASFUSION

Plasma extractor or manual squeezer\*

Suitable for transporting blood into the satellite bag, avoiding unwanted mixing.

SKU	DESCRIPTION	COMPOSITION
EPM PRESS.DB.00- /	Plasma extractor	<ul style="list-style-type: none"><li>• Manual extractor for all types of bags</li><li>• Construction Material: Stainless Steel</li><li>• Transparent front plate for level control</li><li>• Automatic Spring For Spring Extraction</li><li>• Dimensions: 17x 26 x 22 cm</li><li>• Weight: 3.2 kg</li></ul>



# 1 | AB BAGS TRASFUSION

## Bag tube closure systems

Bag sealing system.

SKU	DESCRIPTION	COMPOSITION
WSHS100	Manual system with aluminium rings	Welder
WSMEACS121	Aluminium rings	Aluminium rings for manual system with aluminium rings
HWELD- B.DB.00	Radio frequency welding system	Whole welding system



# 1 | AB BAGS TRASFUSION

## Blood collection scale

To meet the bag capacity and properly blend the blood with the anticoagulant during the withdrawal.

SKU	DESCRIPTION	COMPOSITION
EO51P-B	Withdrawal scale	<ul style="list-style-type: none"><li>• Large display and easy to read from any angle</li><li>• Automatic tare of the collection bag</li><li>• Real-time display of the withdrawal duration</li><li>• Control of the withdrawal duration</li><li>• Dimensions: 17.5x31x29 cm</li><li>• Weight: 3 kg</li></ul>



# 1 | AB BAGS TRASFUSION

Rapid test for blood type determination\*

SKU	DESCRIPTION	COMPOSITION
AG27250110	RAPIDVET-H FELINE DET. GROUPS A, B, AB	PKG/5 TESTS
AG27250115	RAPIDVET-H FELINE DET. GROUPS A, B, AB	PKG/10 TESTS
AG27250120	RAPIDVET-H FELINE DET. GROUPS A, B, AB	PKG/20 TESTS
AG27250185	RAPIDVET-H IMMUNOCR. FELINE DET. GROUPS A, B, AB	PKG/5 TESTS
AG27250210	RAPID VET-H CANINE DET. GROUP DEA1	PKG/5 TESTS
AG27250220	RAPID VET-H CANINE DET. GROUP DEA 1	PKG/10 TESTS
AG27250211	RAPID VET-H CANINE DET. GROUP DEA1	PKG/20 TESTS



# 1 | AB BAGS TRASFUSION

## Holder Locker\*

Device with luer lock connection for sampling through needle free valve.

SKU	DESCRIPTION	COMPOSITION
TEC706-10	Needle free vacuum blood bag sampling device	Can be connected to: TEC708 TEC709 TEC710 TEC711 TEC713 TEC731 TEC724



# 1 | AB BAGS TRASFUSION

## Blood transfuser with filter

Luer lock connection compatible with AB Bags, It protects the patient from micro-aggregates.

SKU	DESCRIPTION	COMPOSITION
TEC717-10	Veterinary medical device for blood transfusion by gravity.	<ul style="list-style-type: none"><li>• 1 transformer with luer lock connections</li><li>• Drip chamber</li><li>• Filter 230µm</li><li>• Roller-type regulator</li><li>• Latex free injection point 60cm</li></ul>
TEC783-10	Veterinary medical device for blood transfusion by gravity. 180cm	<ul style="list-style-type: none"><li>• 1 transformer with luer lock connections</li><li>• Drip chamber</li><li>• Filter 230µm</li><li>• Roller-type regulator</li><li>• Latex free injection point 180cm</li></ul>





# 1 | AB BAGS TRASFUSION

## Extension pipe

Device with luer lock connection for sampling through a needle free valve.

SKU	DESCRIPTION	COMPOSITION
TEC101001FMOLTAI	Extension pipe	<ul style="list-style-type: none"><li>• Diameter: 1x2,5mm</li><li>• 100cm LLF/ LLM free sterile phthalates</li></ul>



# 1 | AB BAGS TRASFUSION

## Needle free valve\*

Bi-directional valve for fluid withdrawal or infusion. Closed system to avoid accidental punctures. Latex, DEHP and PVC free.

SKU	DESCRIPTION
TEC722-20	Bidirectional needle free valve





### AB BAGS - CHEMOTHERAPY

The AB BAGS - Chemotherapy line was created to protect and simplify all veterinaries who provide this delicate service.

The operator and the patient will be protected from exposure to dangerous drugs thanks to a closed system through which you can collect, replenish and inject antitumor drugs in total safety and in a few quick steps.

This will prevent any contamination or leak.





## 2 | AB BAGS CHEMOTHERAPY

### Kit

Kit for withdrawal, mixing and infusion of chemotherapeutics

It is possible to withdraw solutions and safely reconstitute the chemotherapy thanks to the syringes with heat-sealed valve and luer lock adapters for the drug, through compatible AB bags.

SKU	DESCRIPTION	COMPOSITION
TEC721	Veterinary medical device to withdraw, mixing and infusing of chemotherapeutics	<ul style="list-style-type: none"><li>• 1 tubing with drip chamber and roller regulator to connect it to the saline</li><li>• 3-way tap</li><li>• 1 water repellent antibacterial 5µm filter</li><li>• 1 needle free connector</li><li>• bag for chemotherapeutic waste</li></ul>





## 2 | AB BAGS CHEMOTHERAPY

### Kit for withdrawal, mixing and infusion of chemotherapeutics

It is possible to withdraw solutions and safely reconstitute the chemotherapy thanks to the syringes with heat-sealed valve and luer lock adapters for the drug, through compatible AB bags.

SKU	DESCRIPTION	COMPOSITION
TEC844-20	Veterinary medical device for withdrawal, mixing and rapid infusion of chemotherapeutics	<ul style="list-style-type: none"><li>• 1 water repellent antibacterial filter 5µm</li><li>• 3-way tap</li><li>• Needle free connector</li><li>• Piping (internal volume 4ml)</li></ul>
TEC861	Veterinary medical device for withdrawal, mixing and rapid infusion of chemotherapeutics	<ul style="list-style-type: none"><li>• 1 water repellent antibacterial filter 5µm</li><li>• 3-way tap</li><li>• Needle free connector</li><li>• Piping (internal volume 2ml)</li></ul>



## 2 | AB BAGS CHEMOTHERAPY

### Kit for chemotherapeutic drug collection and transfer

Combined with the luer lock adapter to administer drugs through AB Bags, making it a closed drug transfer system.



## 2 | AB BAGS CHEMOTHERAPY

SKU	DESCRIPTION	COMPOSITION
TEC779	Luer lock syringe 1ml	<ul style="list-style-type: none"><li>• Capacity: 1ml</li><li>• Heat-sealed valve for the collection and transfer of chemotherapeutic drug</li></ul>
TEC780	Luer lock syringe 3ml	<ul style="list-style-type: none"><li>• Capacity: 3ml</li><li>• Heat-sealed valve for the collection and transfer of chemotherapeutic drug</li></ul>
MY8005-0006	Luer lock syringe 5ml	<ul style="list-style-type: none"><li>• Capacity: 5ml</li><li>• Heat-sealed valve for the collection and transfer of chemotherapeutic drug</li></ul>
TEC781	Luer lock syringe 10ml	<ul style="list-style-type: none"><li>• Capacity: 10ml</li><li>• Heat-sealed valve for the collection and transfer of chemotherapeutic drug</li></ul>
TEC782	Luer lock syringe 20ml	<ul style="list-style-type: none"><li>• Capacity: 20ml</li><li>• Heat-sealed valve for the collection and transfer of chemotherapeutic drug</li></ul>
MY8060-006	Luer lock syringe 60ml	<ul style="list-style-type: none"><li>• Capacity: 60ml</li><li>• Heat-sealed valve for the collection and transfer of chemotherapeutic drug</li></ul>

## 2 | AB BAGS CHEMOTHERAPY

Kit to drugs and saline access, or to safety withdraw and blend them without the use of needle

The connection with the luer lock syringe to the AB Bag heat-sealed valve makes it a closed drug transfer system.

SKU	DESCRIPTION	COMPOSITION
MV0413-0006	Drug adapter with luer lock connection	13mm diameter
MV0420-0006	Drug adapter with luer lock connection	20mm diameter



## 2 | AB BAGS CHEMOTHERAPY

Kit to drugs or saline access and safely collect or blend without the use of a needle

The presence of a 0,2µm filter minimizes aerosols and contamination. Latex, DEHP and PVC free.

SKU	DESCRIPTION	COMPOSITION
TEC730-1	Safe vial adapter to drugs or saline access for drop withdrawal, or to safely blend without using a needle	<ul style="list-style-type: none"><li>• Hydrophobic filter 0,2µm with air intake</li><li>• 28mm Ø vial access device</li><li>• 1 needle free valve</li></ul>



## 2 | AB BAGS CHEMOTHERAPY

Kit to saline access, to safely withdraw or blend without the use of a needle

Latex, DEHP, PVC free.

SKU	DESCRIPTION	COMPOSITION
TEC845	Universal needle free adapter with perforator, for accessing to saline solutions to saline access for drop withdrawal, or to safely blend without using a needle	<ul style="list-style-type: none"><li>• Hydrophobic filter 0,2µm with air intake</li><li>• Perforator</li><li>• Luer lock connection with cap</li></ul>





## 2 | AB BAGS CHEMOTHERAPY

### Instruments

#### Biohazard extractor hood Asalair Mod.900

It's designed and built to protect the operator, to increase the protection of the product from external contamination and minimize the biological risks for the environment, thanks to the absolute filtration (HEPA filter) of the expelled air. The hood has been designed, studied and built to allow handling in a sterile environment without infectious agents belonging to risk group 2 and group 3.

SKU	DESCRIPTION	COMPOSITION
AS29940030	Vertical laminar flow microbiological safety cabin class II type A2, with front opening for an easy can access to the working chamber	<ul style="list-style-type: none"><li>• 2 fan motors</li><li>• 1 absolute filter HEPA (class H14 - 99,995%)</li><li>• 1 absolute filter HEPA (class H14 - 99,995%) for air expulsion</li><li>• 1 30W fluorescent lamp (900LUX)</li><li>• 1 air/vacuum tap</li><li>• 2 service sockets inside the room</li><li>• 1 gas faucet complete with solenoid valve</li><li>• 1 attachment with rubber holder for PDO test</li><li>• Weight: 225kg</li><li>• Dimensions (WxDxH): 130x100x175 cm</li></ul>



## 2 | AB BAGS CHEMOTHERAPY

### Hood accessories

SKU	DESCRIPTION	COMPOSITION
AS30300177	Active carbon filter	Insert the active carbon filter after the HEPA filter, for air expulsion and to work with toxic vapours
AS3030070	Exacarb module	Exacarb module with active carbon filter with motor fan
AS29790020	Germicidal lamp	Germicidal lamp for 15W hood with support

## 2 | AB BAGS CHEMOTHERAPY

### CONSUMABLES AND DISPOSABLE

Personal protective equipment \*

SKU	DESCRIPTION	COMPOSITION
BH39920S	Protective latex gloves	Size S
BH39921M	Protective latex gloves	Size M
BH39922L	Protective latex gloves	Size L
BH39923XL	Protective latex gloves	Size XL
BSM-BI-4010	Protective antiblastic latex gloves	To handle cytostatic, chemical, biological and viral agents • Size S
BSM-BI-4020	Protective antiblastic latex gloves	To handle cytostatic, chemical, biological and viral agents • Size M
BSM-BI-4030	Protective antiblastic latex gloves	To handle cytostatic, chemical, biological and viral agents • Size L
BSM-BI-4040	Protective antiblastic latex gloves	To handle cytostatic, chemical, biological and viral agents • Size XL
FFP3-20	Filter face mask with exhalation valve	FFP3 foldable filter face mask with exhalation valve

## 2 | AB BAGS CHEMOTHERAPY

### Personal protective equipment\*

SKU	DESCRIPTION	COMPOSITION
BSM-162010	Safety glasses	Polycarbonate safety glasses
BSM0059021-20	Protective gown	To protect the operator against biological and cytostatic agents
BSM-BI-8100	Absorbent pad for drug handling	Size 56x41 cm



## 2 | AB BAGS CHEMOTHERAPY

### Needle free valve\*

Closed system to avoid accidental punctures. Latex, DEHP, PVC free.

SKU	DESCRIPTION	COMPOSITION
TEC722-20	One bi-directional needle free valve	Two-way valve for fluid withdrawal or infusion



## 2 | AB BAGS CHEMOTHERAPY

Safety container for histological\*

SKU	DESCRIPTION	COMPOSITION
MEC06011	Safety container for histological 60 ml	<ul style="list-style-type: none"><li>• Capacity 60 ml</li><li>• With 10 ml of formalin</li><li>• With 10 ml phosphate buffer</li><li>• PKG 48pc</li><li>• Dimensions 48x66 mm</li></ul>
MEC15001	Safety container for histological 150 ml	<ul style="list-style-type: none"><li>• Capacity 150 ml</li><li>• With 60 ml of formalin</li><li>• PKG 24pc</li><li>• Dimensions 464x88 mm</li></ul>
MEC50001	Safety container for histological 550 ml	<ul style="list-style-type: none"><li>• Capacity 550 ml</li><li>• With 230 ml of formalin</li><li>• PKG 48pc</li></ul>



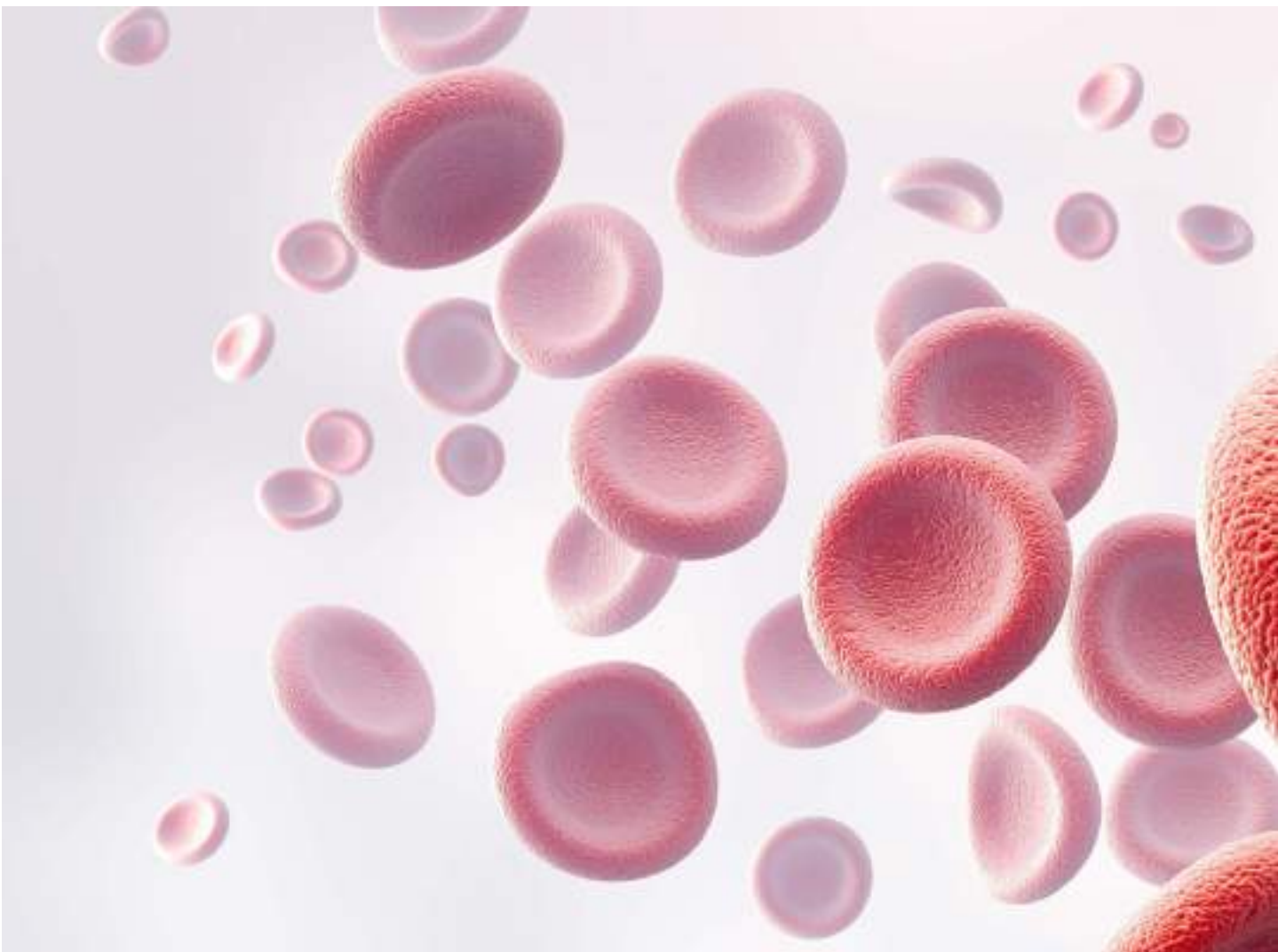
## 2 | AB BAGS CHEMOTHERAPY

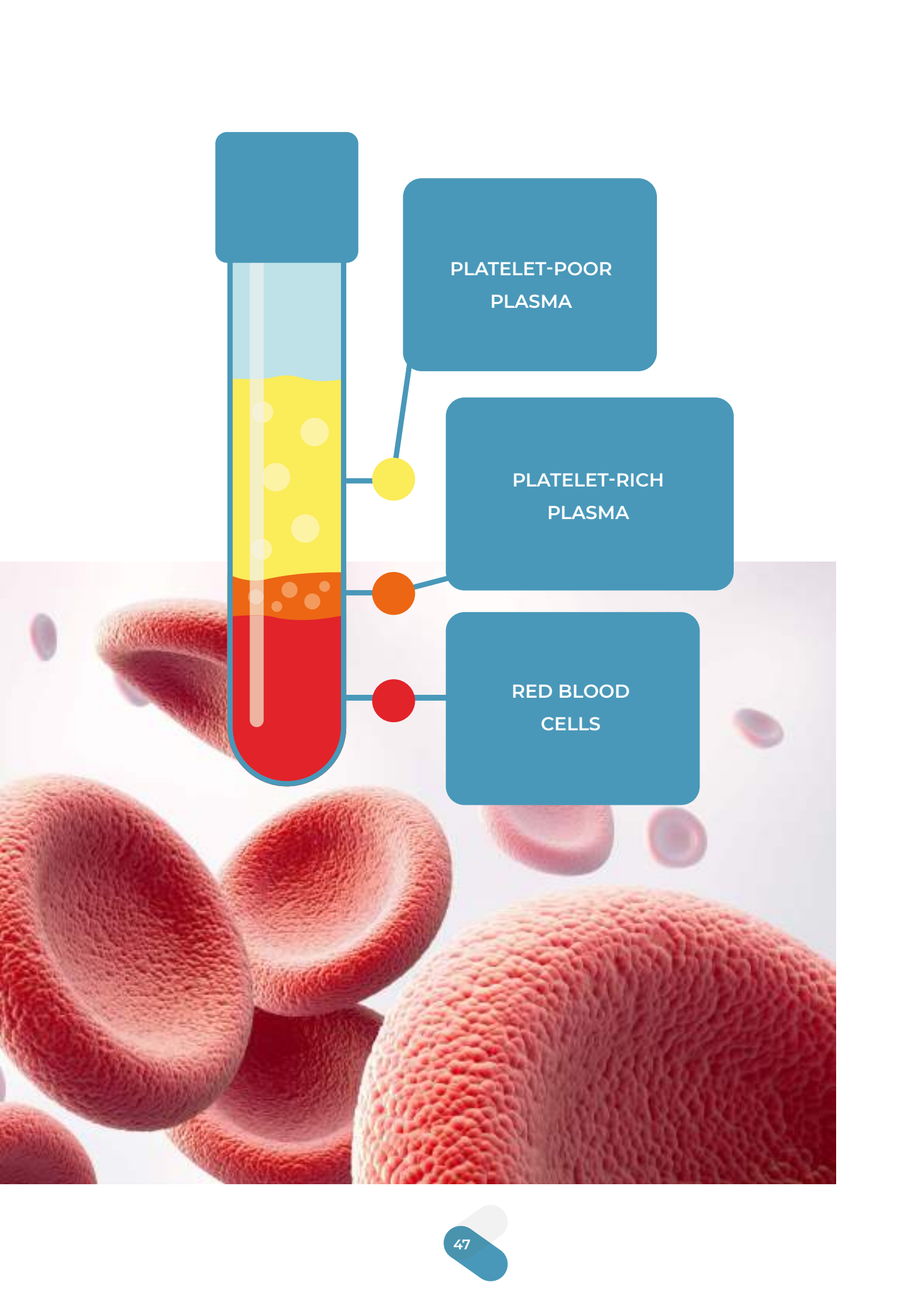


### PRP System

PRP System is a valid ally for many applications, such as orthopaedics, ophthalmology, surgery, dentistry, traumatology, dermatology and in all areas where rapid and effective tissue regeneration is needed.

In few and simple steps you will get a supportive therapy with tangible and visible results, for multiple pathologies, without running in any risks.





PLATELET-POOR  
PLASMA

PLATELET-RICH  
PLASMA

RED BLOOD  
CELLS

## 3 | PRP SYSTEM

### Kit

#### PRP Kit

Withdraw a whole blood sample from the patient with the supplied syringe, with Sodium Citrate ratio of 1:10.

1. Transfer the withdrawn whole blood inside the cylinder and seal it with the cap.
2. Spin the blood with a special centrifuge that gently starts and stops, to avoid the resuspension of the platelets.
3. Once separation is achieved, connect the female/female connection cap and attach an empty syringe to transfer the component.
4. To transfer the component into the syringe, use the innovative screw plunger, which allows a slow separation of the concentrate, without the risk of resuspension. You can split the Platelet Poor Plasma (PPP) from the Platelet Rich Plasma (PRP) into two syringes and select the Buffy coat.
5. Once the PRP is separated from the corpusculate part, connect the infiltration needle, taking care to create a sterile field. You can get a platelet gel by adding calcium gluconate.

SKU	DESCRIPTION	COMPOSITION
BS3527	PRP Kit - Platelet Rich Plasma - suitable for multiple applications	<ul style="list-style-type: none"><li>• 30ml or 60ml device</li><li>• 1 screw piston, not operator dependent</li><li>• 2 needles</li><li>• 3 luer lock connectors</li><li>• 1 10ml syringe</li><li>• 1 5ml syringe</li><li>• 1 adjustable 20ml syringe</li></ul>

# 3 | PRP SYSTEM



## 3 | PRP SYSTEM

### 10ml Bag\*

Bag for PRP containment and storage. Suitable to turn the preparation into a gel.

SKU	DESCRIPTION	COMPOSITION
TEC1027-25	10 ml Bag	<ul style="list-style-type: none"><li>• 10 ml bag</li><li>• Swabable connector</li></ul>



## Instruments

### PRP centrifuge

Suitable for rapid plasma separation.

SKU	DESCRIPTION	COMPOSITION
40100302	Ventilated bench centrifuge, with automatic rotor recognition, equipment check and maximum speed check	<ul style="list-style-type: none"> <li>• Dimensions (WxDxH): 45x59x33 cm</li> <li>• Weight: 40kg</li> <li>• Maximum load capacity: 4x175 ml</li> <li>• Maximum speed 6,000 rpm</li> <li>• Safety speed limiter function</li> <li>• Microprocessor control</li> <li>• Backlit multicolor LCD display with simultaneous display of all parameters</li> <li>• Compact dimensions to optimize laboratory spaces</li> <li>• Unbalance detection with automatic interruption of operation to avoid accidents</li> <li>• Automatic locking of the cover with the possibility of recovery of the tubes in case of lack of electricity</li> <li>• Corresponding to CE directives ICE 1010-1; IEC 1010-2-020</li> </ul>





## 3 | PRP SYSTEM

### Centrifuge components and accessories\*

SKU	DESCRIPTION	COMPOSITION
40100612	Glass for vacutainer type tubes Accessory	<ul style="list-style-type: none"><li>• 5/7ml</li><li>• Dimensions 13 mm</li><li>• Max. for insert 7 and for rotor 28</li><li>• PKG4 PC</li></ul>
40100502	Oscillating rotor for aluminium rocker Component	<ul style="list-style-type: none"><li>• 4 glasses B-175</li><li>• 4 covers of biosafel L 175</li><li>• Max. speed 4,500 rpm</li><li>• RFC max. 3600xg</li></ul>
40100662	Falcon type spherical bottom cup Component	PKG4 PC



## 3 | PRP SYSTEM

### Centrifuge consumable\*

SKU	DESCRIPTION	COMPOSITION
PCSA381.PSO	Sodium citrate vial	<ul style="list-style-type: none"><li>• 380mg/10ml (3.8%)</li><li>• Sterile apyrogenic anticoagulant</li><li>• solution</li><li>• PKG/5</li></ul>





FUTURLAB <sup>®</sup>  
TECNOLOGIE PER LA DIAGNOSTICA

**Futurlab s.r.l.**



Via L.Pierobon 63,  
35010 Limena (PD)



Tel. +39 049 88 43 461  
Fax +39 049 76 62 235



[info@futurlab.it](mailto:info@futurlab.it)



[www.futurlab.it](http://www.futurlab.it)

